

ACTUATION SYSTEMS FOR HIGH-END PATIENT LIFT APPLICATIONS

www.timotion.com

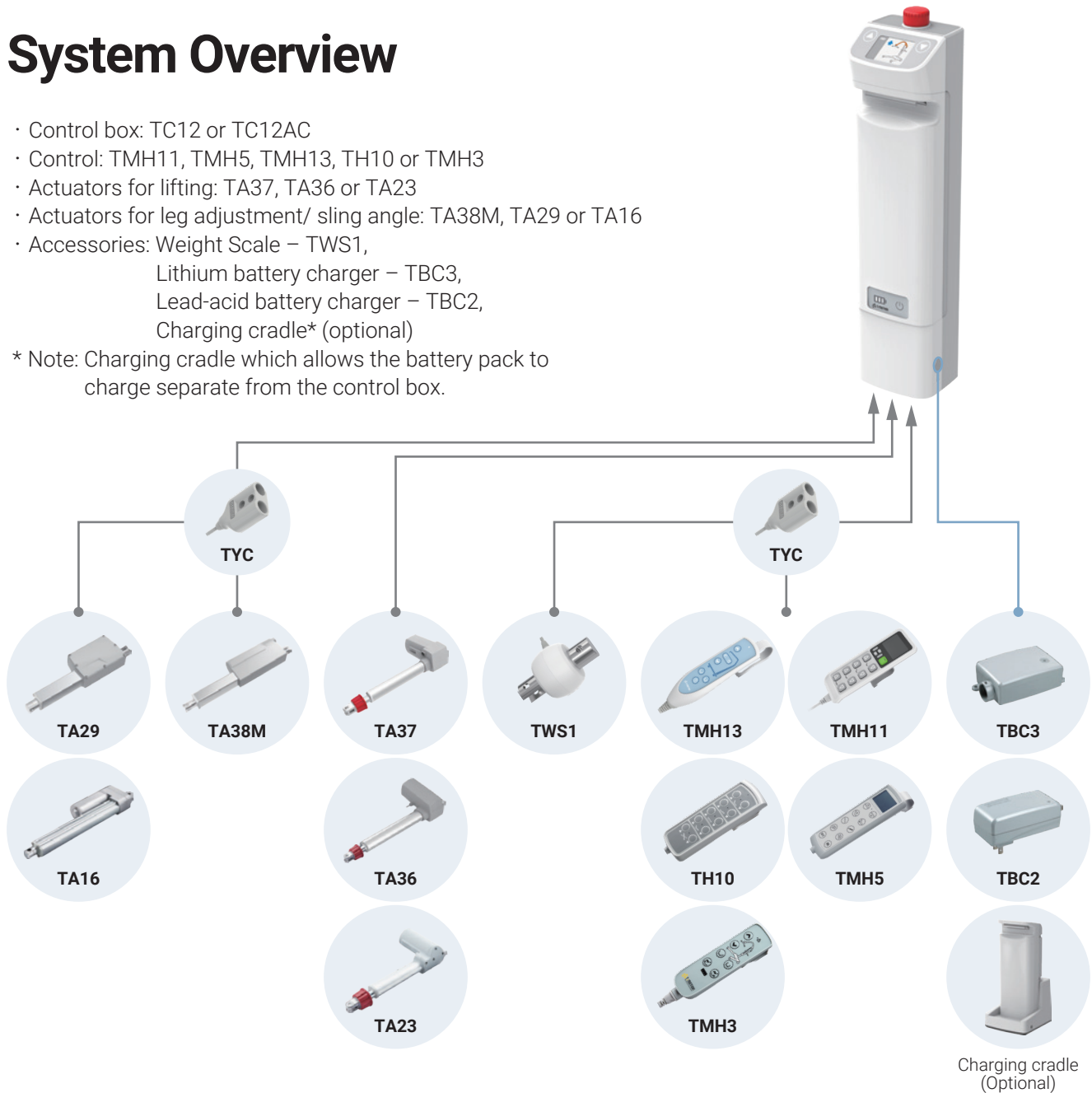
TiMOTION has created an optimal solution to meet specific patient needs and to secure a safe and comfortable transfer, as well as achieve a safe and efficient working environment for the caregivers. This solution provides high-end patient lifts at hospitals.



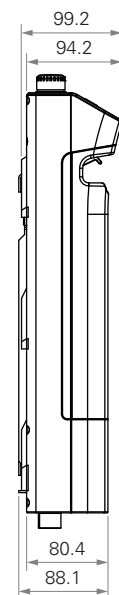
System Overview

- Control box: TC12 or TC12AC
- Control: TMH11, TMH5, TMH13, TH10 or TMH3
- Actuators for lifting: TA37, TA36 or TA23
- Actuators for leg adjustment/ sling angle: TA38M, TA29 or TA16
- Accessories: Weight Scale – TWS1,
Lithium battery charger – TBC3,
Lead-acid battery charger – TBC2,
Charging cradle* (optional)

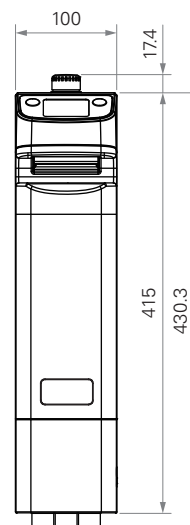
* Note: Charging cradle which allows the battery pack to charge separate from the control box.



Standard Dimensions (mm)



Battery type: 24V, 2.9Ah



Battery type: 24V, 5Ah

An Intelligent Actuation System for Patient Lifts

TC12 and TC12AC are high-end control boxes for a patient hoist system which meets specific patient needs and secures a safe and comfortable transfer. Both of them offer multiple display and flexible battery charge options. The unique design of TC12AC is equipped with an AC plug to connect the power directly. Their slim physical design meets the installation dimension requirements. In addition, they offer flexible and customized key products based upon the customer's needs.



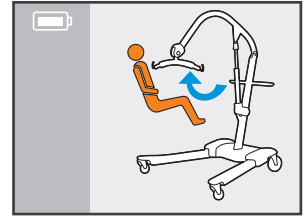
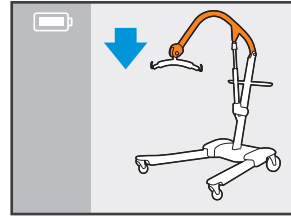
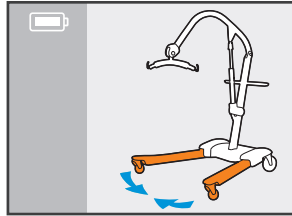
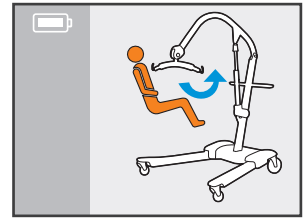
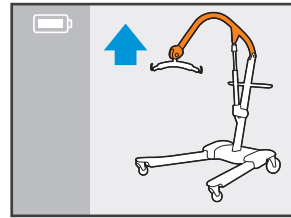
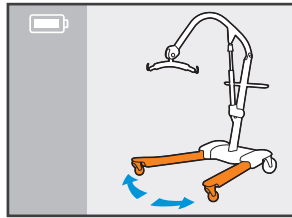
TC12 and TC12AC key features:

- Multiple LCD displays: No Display / Black-White / Color
- Detachable battery pack: 2.9Ah or 5Ah
- With wall mount battery charger: TBC2 (Note: charge cradle is optional)
- IP rating: Up to IP66
- Certificate: IEC60601-1, ES60601-1, IEC60601-1-2
- Emergency stop button
- Easy installation
- LED power indicator on the battery pack (optional)

Note: TC12AC has an AC plug, which provides an alternative charging approach.

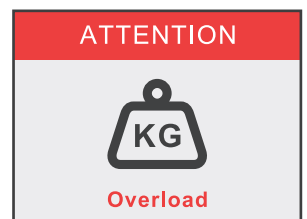
Operation Status

Control legs open /
close and sling up / down

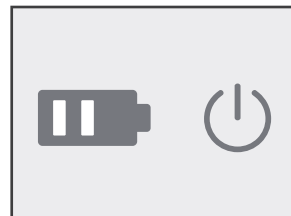
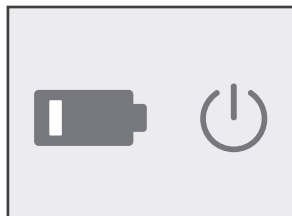


Notification

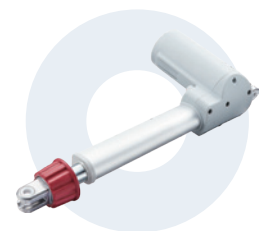
Alarm for low battery capacity, overloading, and
safety switch to prevent over extending



Battery Status



Actuators for Lifting



TA23

Max. load

10,000N (push); 4,000N (pull)

Max. speed at max. load

3.2mm/s

IP rating

IP66W

Options

Manual release (for patient hoist)



TA36

Max. load

10,000N (push); 6,000N (pull)

Max. speed at max. load

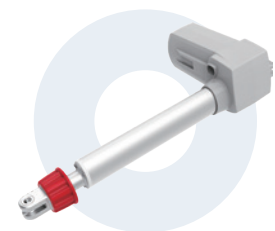
5.4mm/s

IP rating

IP66W

Options

Manual release (for patient hoist)



TA37

Max. load

12,000N (push)

Max. speed at max. load

5.3mm/s

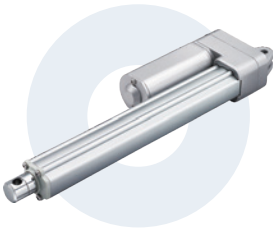
IP rating

IP66W

Options

Manual release (for patient hoist)

Actuators for Leg Adjustment / Angle of Sling



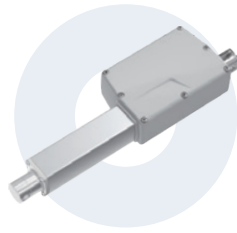
TA16

Max. load

3,500N (push/pull)

Retracted length

≥ Stroke + 112mm



TA29

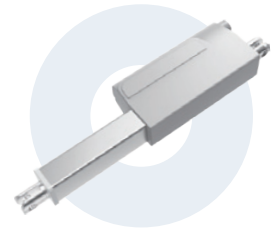
Max. load

6,000N (push); 3,500N (pull)

Retracted length

≥ 178mm

(depending on chosen options)



TA38M

Max. load

2,000N (push); 1,500N (pull)

Retracted length

≥ 160mm

(depending on chosen options)

Controls & Accessories



TMH5

Max. available buttons

10

IP rating

IP66W



TMH11

Max. available buttons

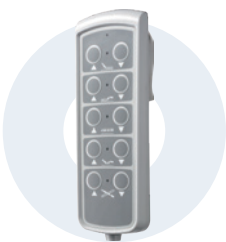
13

IP rating

IP54

Options

Voice IC



TH10

Max. available buttons

10

IP rating

IP66

Options

Back light



TMH3

Max. available buttons

6

IP rating

IP66

Options

Hook



TMH13

Max. available buttons

7

IP rating

IP66W

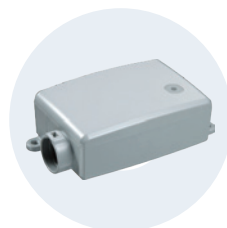
Options

Hook



TBC2

Battery charger



TBC3

Battery charger

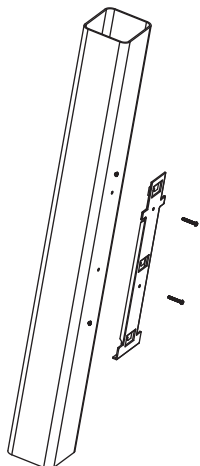


TWS1

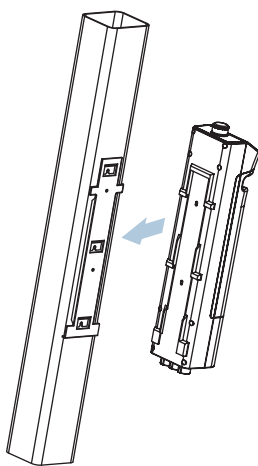
Weight scale

Installation Guide

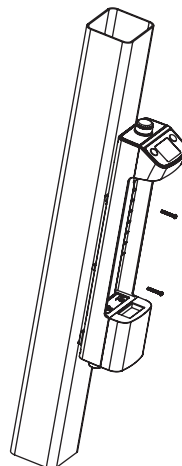
1. Install the bracket on the hoist frame



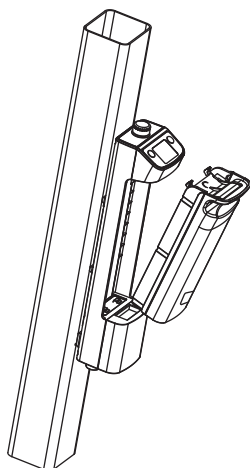
2. Install the TC12 on the bracket



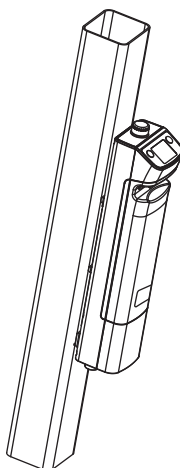
3. Make sure all fasteners are tightened properly



4. Install the battery



5. Installation is complete



Taiwan & China

+886 2 2219 6633
sales.tw@timotion.com

Europe

+33 (0)1 74 82 50 51
sales.eu@timotion.com

USA

(704) 708 6924
sales.us@timotion.com

Australia

+61 3 8725 0331
sales.tw@timotion.com

Japan

+81 6 6713 1188
sales.jp@timotion.com

Korea

+82 31 745 1060
sales@timotion.co.kr